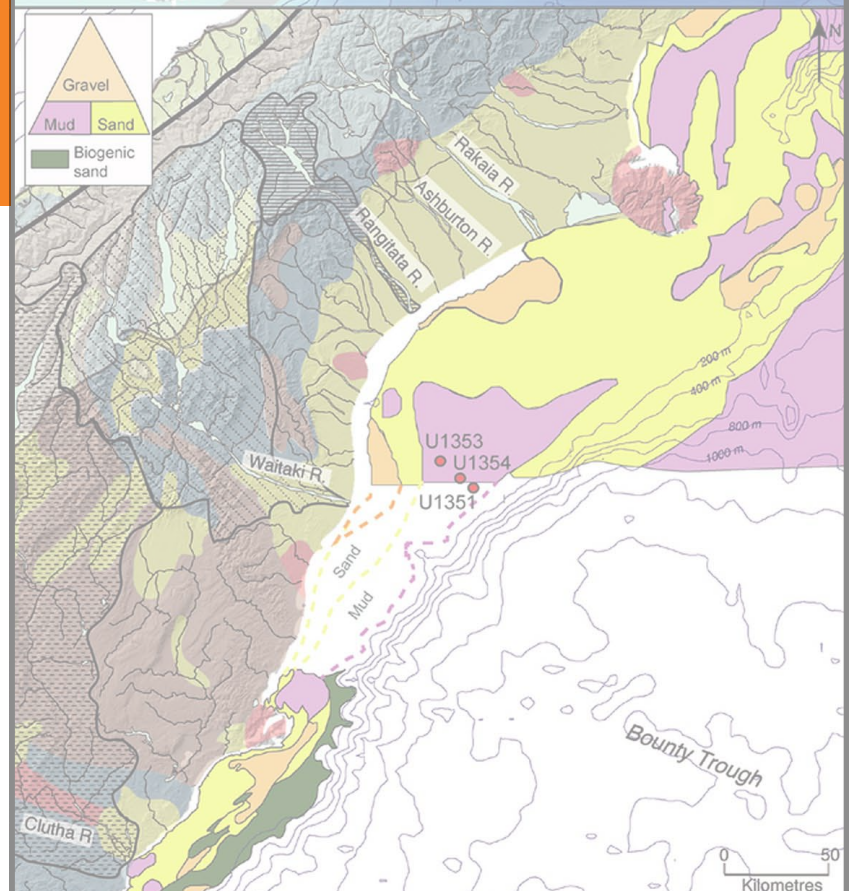
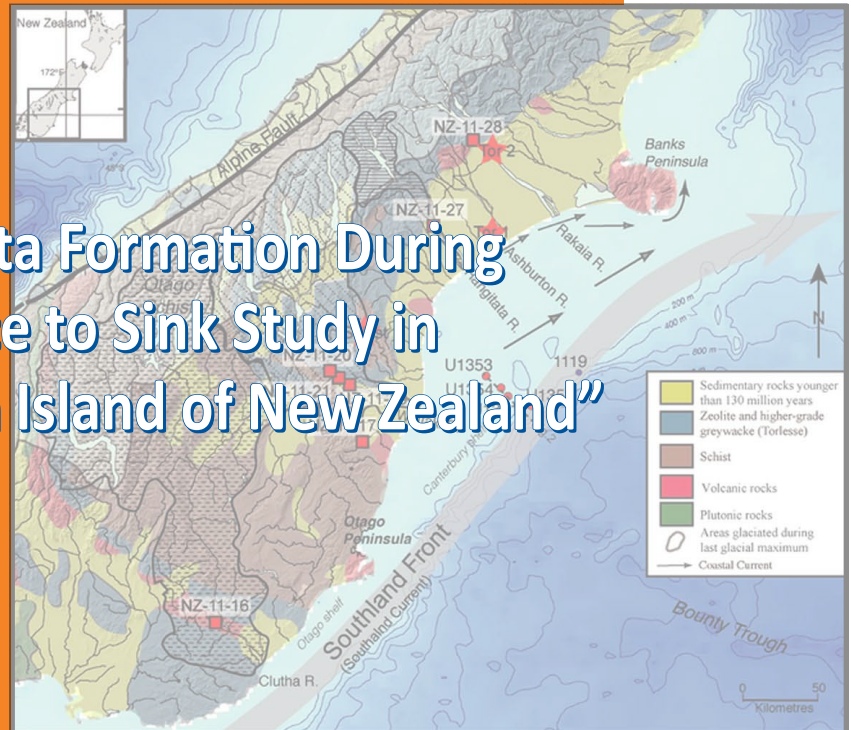


# Dissertation Defense

## “Continental Margin Strata Formation During the Pleistocene: A Source to Sink Study in Canterbury Basin, South Island of New Zealand”

presented by

Tania G. Villaseñor-Jorquera  
PHD CANDIDATE



University of Florida  
Department of Geological Sciences  
241 Williamson Hall  
1843 Stadium Road  
PO Box 112120  
Gainesville, Florida 32611-2120  
voice 352-392-2231  
fax 352-392-9294  
[www.geology.ufl.edu](http://www.geology.ufl.edu)

10AM . Wednesday . June 10, 2015 . 265 Williamson Hall